



SEASON **22**
23 *Dream*
WITH US...

Board Chair

Bill Tweit

Board Vice Chair

Lena Mendiola

Board Secretary

Laurel Gonzalo

Board Treasurer

Craig Stephens

Board of Directors

Chris Barnes

Eric Charneski

Natalie Coblentz

Tony Enzler

Wes Martin

Todd Monohon

Kelly Seago

Lifetime Trustee

Renee Ries

Music Director

Alexandra Arrieche

Executive Director

Jennifer Hermann

Finance Director

Milt Harper

Executive Assistant

Renée Zimmerman

Orchestra Manager

Anna Barbee

Orchestra Librarian

Lucy Winter

Social Media Manager

Julie Sandvig

TAX ID: 91-6087694

BASS SECTION AUDITIONS (1 POSITION)

GENERAL AUDITION INFORMATION:

To apply for this audition, please submit materials to the Olympia Symphony Orchestra (OSO) at personnel@olympiasymphony.org on or before the deadline of **Friday, August 27, 2022 at 5:00 pm PT.**

Please await confirmation of your audition before making travel plans. The auditions are on **Saturday, September 10, 2022**, at [Tumwater Middle School](#). Invitations are sent by email, typically within one week of the resume deadline.

All questions regarding the audition must be directed to the Orchestra Manager only. The preferred method of contact is by email to personnel@olympiasymphony.org.

JOB INFORMATION:

- Members of the Orchestra contribute to achieving the OSO mission by fulfilling core expectations regarding artistry, decorum, and attendance.
- While the Orchestra is comprised of musicians of varying ranges of ability and experience, it is essential that the Orchestra maintains a minimum artistic standard for the ensemble to function and improve. Specifically, in order to become and remain a member of the Orchestra, the Music Director must be satisfied that each musician has:
 - Technical proficiency
 - A functional sense of rhythm, intonation, and the ability to tune within harmonies
 - An ability to sight-read
 - An ability to clearly improve one's part through practice
 - An ability to adapt stylistically
 - An ability to rehearse and retain information
- To fulfill the OSO mission, the Orchestra needs to pursue the most rigorous standard of artistry it can reasonably expect to sustain. The pursuit of excellence in artistry relies primarily upon each member's commitment to individual practice. Ultimately, assessment and enhancement of the Orchestra's artistic standard rests with the Music Director.

Enrich | Educate | Entertain

3400 Capitol Blvd SE Suite 203 | Olympia WA 98501
360.753.0074 | www.olympiasymphony.org



SEASON **22**
23 *Dream*
WITH US...

- Membership in the Olympia Symphony Orchestra is based on a season commitment, and the signing of an employee agreement. Prior to each season, Orchestra members in good standing from the previous season are invited to commit to the subsequent season, to fill their prior positions in the complement of the Orchestra. Remaining vacancies in the Orchestra's complement will be filled by audition, one year appointments, or by substitute musicians. The symphony currently mostly rehearses on a semi-condensed two week schedule per concert cycle.
- The compensation policy and the rate(s) of compensation are set by the OSO Board of Directors through their annual budgetary process. Mileage reimbursement is available for musicians driving 50-100 mi round trip per service (\$0.225/mile). Section rates for the 22/23 season are \$41.54 per service. Concert cycles are typically seven services.

POSITION DETAILS:

- The Candidate should be available to perform during the 2022/2023 Season. Concert dates are as follows:
 - October 16, 2022 @ 3:00 pm
 - December 23, 2022 @ 7:30 pm
 - February 4, 2023 @ 7:30 pm & February 5, 2023 @ 3:00 pm
 - March 19, 2023 @ 3:00 pm
 - April 23, 2023 @ 3:00 pm
 - May 20, 2023 @ 7:30 pm
 - May 7 & 21, 2023 (SOGO side-by-side, optional)
 - July 2023 (summer concert, date TBD)

BASS SECTION AUDITION PROCESS:

1. **FIRST ROUND** – one-page resume and **AUDIO** recording (solo piece of choice)
2. **SECOND ROUND** – LIVE (BLIND) AUDITION:
 - Orchestral excerpts:
 - BEETHOVEN: Symphony 5, mvt III - beg. to 18; Trio to 23 after B
 - BEETHOVEN: Symphony 9, mvt. IV - Allegro Assai mm. 92-163
 - STRAUSS: Don Juan - beginning to 6 before Letter D
 - Sight reading
3. **THIRD ROUND** – Interview with Music Director and Concertmaster
4. **FINAL ROUND** – One Season Probation

Enrich | Educate | Entertain

3400 Capitol Blvd SE Suite 203 | Olympia WA 98501
360.753.0074 | www.olympiasymphony.org

Beethoven — Symphony No. 5

6

Violoncello e Basso

199 Viol. I Più moto $\text{♩} = 116$

208 Vello

215 Tempo I

227

239

Allegro $\text{♩} = 96$
unis.

14

27

42

55

p *pp* *cresc.* *f* *sf* *cresc.* *ff* *p* *ff* *pp* *cresc.* *poco rit.* *a tempo* *f* *sf* *dimin. pp* *pp* *cresc.*

The image shows a page of a musical score for the Violoncello and Bass parts of Beethoven's Symphony No. 5. The page is numbered 6 at the top left. The title 'Beethoven — Symphony No. 5' is centered at the top, with 'Violoncello e Basso' below it. The score begins at measure 199 with the first Violin part (Viol. I) and continues with the Cello (Vello) and Bass (Cb.) parts. The tempo is marked 'Più moto' with a quarter note equal to 116 beats. The key signature is three flats (B-flat, E-flat, A-flat). The score includes various dynamics such as *p* (piano), *pp* (pianissimo), *f* (forte), *sf* (sforzando), and *cresc.* (crescendo). There are also tempo markings: 'Tempo I' at measure 215, 'Allegro' at measure 239 (circled in red with a red arrow pointing to it), 'poco rit.' (poco ritardando), and 'a tempo'. The score ends at measure 55 with a *cresc.* marking. A red bracket highlights the section starting at measure 14, which is marked 'a tempo' and 'Corno' (Horn).

Beethoven — Symphony No. 5

Violoncello e Basso

7

68 *f*

82 *sf sf sf sf sf*

96 [A] *dimin. pp* Vello Cb. *f > p* pizz. pizz.

109 Vello *f > p* *sempre p*

122 *cresc. - - -* unis. arco *ff* Vello Cb.

137 unis. *p* *f*

147

158 1. 2. *f*

166

175 1 2 3 4 5 6

188 Vello [B] Cb. *f*

198 unis. *dimin.* *p*

207 *sempre più p* 8

Beethoven — Symphony No. 9

Violoncello e Contrabbasso

18

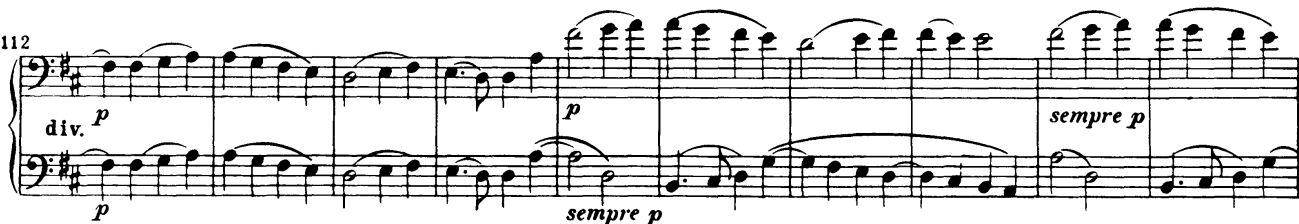
92 Allegro assai $\text{♩} = 80$



102



112



122



131



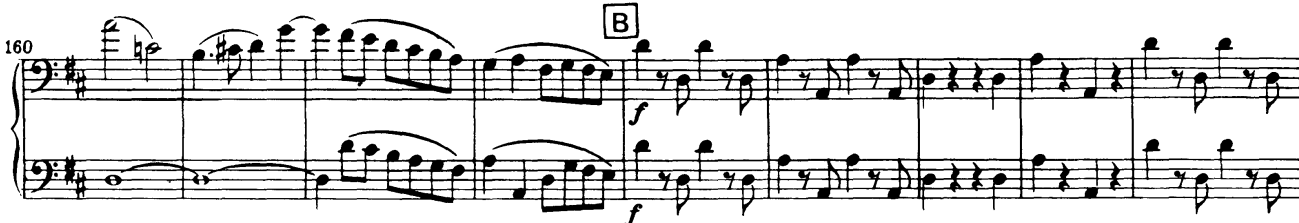
140



150



160



169



Richard Strauss Don Juan, Op.20

BASSO

Allegro molto con brio.

ff *pizz.* *arco* *mf* *mf* *ff* *3* *ff* *fff* *ff* *pizz.* *arco* *pp* *ff* *tranquillo* *1* *molto vito* *f* *3* *ff* *p* *cresc.* *ff* *rapidamente* *3* *6* *poco cal.* *D tranquillo* *1* *2* *3* *4* *5* *6* *ppp* *pp* *pp* *3* *4* *5* *p* *cresc.* *dim.* *E* *p* *cresc.* *dim.* *pp*